



GOLDEN WALK GERMISTON, GAUTENG

The Golden Walk Shopping Centre is ideally located in the busy Germiston CBD on Gauteng's East Rand. Its close proximity to the taxi rank and train station make it a popular commuter mall and Golden Walk serves as a central hub for the many commuters moving through the CBD each day.

As a single level mall, the 45 123m² Golden Walk Shopping Centre is easy to navigate. It houses most of the leading national and independent retailers, across all key categories, earning Golden Walk its reputation as the mall with everything you need.

AUDIENCE

The majority of shoppers are in the LSM 5 to 6 living standards group. There are more female shoppers (78%) than male shoppers (22%) and they are in the full-nest life cycle stage. Main languages spoken include Zulu, Pedi and Xhosa.

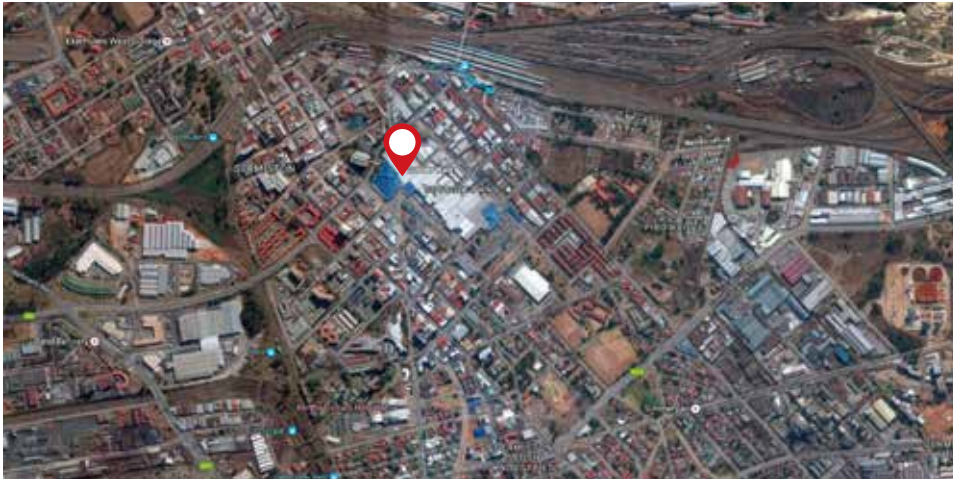


THERESSA SOLOMON: TELEPHONE 011 677 3992
EMAIL THERESSAS@REDEFINE.CO.ZA

TENANTS

Tenants at Golden Walk include leading banks such as Absa, African Bank, FNB, Nedbank, Standard Bank and Capitec. Affordable fashion is represented by stores like Mr. Price, Ackermans, Jet, Choice Clothing, PQ Clothing, Tekkie Town and Discount Fashion, with national retailers Edgars and Foschini also in the mix. Affordable home stores also feature with tenants like Beares, OK Furniture and Sheet Street. Mobile and technology stores are also well represented at Golden Walk and include Cell C, Cell Clinix, MTN and Multichoice, among others. There is a wide selection of popular fast food outlets such as Chicken Licken, Chesa Nyama and KFC, to name a few.

TOTAL TENANTS: 114 | ANCHOR TENANTS: SHOPRITE, PICK N PAY, EDGARS, WOOLWORTHS, MR PRICE



LOCATION

141 VICTORIA STREET, GERMISTON

Situated in the Germiston CBD in close proximity to the taxi rank and train station.

TRADING HOURS

Monday – Friday	09h00–17h00
Saturday	09h00–16h00
Sundays/public holidays	09h00–14h00



ANNUAL MALL TRADING DENSITY

R26 776/m²

ANNUAL FOOT COUNT

14.4 million

CAR COUNT

1 650 parking bays

COMMUTER PERCENTAGES

Taxis	71%
Vehicles	12%

GROSS LETTABLE AREA (GLA)

45 123m²

LEASING ENQUIRIES

Charlotte Sello

011 776 2681 | charlottes@redefine.co.za

OWNERSHIP/MANAGEMENT

Redefine Properties (Pty) Ltd

ADDITIONAL SERVICES

STANDBY POWER

Golden Walk Shopping Centre has facilities to supply the centre with standby power in the event of normal electricity interruptions such as power outages and load shedding.

MARKETING OPPORTUNITIES

There are 20 exhibition courts available at various high-traffic locations throughout the mall. This is an ideal platform to showcase your products and services to the 1,2 million shoppers visiting the mall each month. The mall also has a large parking area that can be used for bigger events and roadshows. Advertising sites inside the mall include digital screens, mall posters and bathroom posters. Golden Walk also has a dedicated website and Facebook page.

MARKETING AND PROMOTIONS


Paula Lamprecht


011 677 3992 | paulal@redefine.co.za

CONTACT DETAILS

Centre management 011 776 2681

Centre manager Charlotte Sello
011 776 2681 | charlottes@redefine.co.za

 www.goldenwalkcentre.co.za

 Golden Walk Shopping